

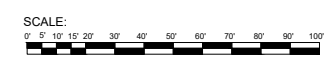
THE NATL RESTAURANT ASSN SHOW

MAY 20-23, 2023

MCCORMICK PLACE - LEVEL 3, HALL B - CHICAGO, IL



LEVEL 3 HALL B1



Inventory as of 03/18/2022

Dimension	Size	Qty	SqFt	Rented	Available
10x10	100	181	18,100	0	181
10x15	150	14	2,100	0	14
10x20	200	121	24,200	0	121
10x25	250	1	2,500	0	1
10x30	300	18	5,400	0	18
10x35	350	1	3,500	0	1
10x40	400	3	1,200	0	3
10x50	500	1	5,000	0	1
20x20	400	65	28,000	0	65
20x30	600	29	17,400	0	29
20x40	800	23	18,400	0	23
20x50	1,000	6	6,000	0	6
20x60	1,200	4	4,800	0	4
20x80	1,600	1	1,600	0	1
20x90	1,800	1	1,800	0	1
30x110	3,300	2	6,600	0	2
30x30	900	5	4,500	0	5
30x40	1,200	2	2,400	0	2
30x50	1,500	5	7,500	0	5
50x100	5,000	1	5,000	0	1
50x50	2,500	1	2,500	0	1
50x60	3,000	2	6,000	0	2
50x90	4,500	1	4,500	0	1
60x80	4,800	1	4,800	0	1
Totals:		489	171,900	0	489

REVISION
Date: 3/18/2022
By: JULIO PANTOJA, CHICAGO

BLDG. LEGEND:

GRAND CONCOURSE LOBBY
FLOOR LOAD - 100# PER SQ FT
GRAND CONCOURSE LOBBY
PORT LEGEND
□ TYPE C
□ 120V SINGLE .15 AMP
□ 208V THREE .30 AMP

LEGEND - EXHIBIT HALL B1
FHC - FIRE HOSE CABINET (MUST REMAIN CLEAR)
CEILING HEIGHT - 40' UNDER LIGHTS
FLOOR LOAD - 400# PER SQ.FT.

EXHIBIT HALL B1 - FLOOR PORTS

ELECTRICAL
□ TYPE A
1 - 100A, 480V RECEPTACLE
1 - 30A, 208V RECEPTACLE
3 - 15A, 120V RECEPTACLES W/FUSES
1 - ANTENNA OUTLET
2 - DUPLEX TELEPHONE OUTLETS
□ TYPE B
1 - 60A, 208V RECEPTACLE
1 - 30A, 208V RECEPTACLE
3 - 15A, 120V RECEPTACLES W/FUSES
1 - ANTENNA OUTLET
2 - DUPLEX TELEPHONE OUTLETS
□ PLUMBING SERVICE BOX IN FLOOR
1* COMPRESSED AIR 100 P.S.I. (180 C.F.M.)
1* NATURAL GAS 1 P.S.I. (27" W.C.)
1* DOMESTIC WATER 60 P.S.I. (35 G.P.M.)
4* DRAIN IN FLOOR

LEGEND - HALL B2 (ANNEX)
CEILING HEIGHT - 18' UNDER LIGHTS
FLOOR LOAD - 400# PER SQ.FT.
FHC - FIRE HOSE CABINET
FHR - FIRE HOSE RACK
FEX - FIRE EXTINGUISHER
■ COLUMNS ARE 18" x 18"

EXHIBIT HALL B2 - FLOOR PORTS

PLUMBING SERVICE OVERHEAD
1* COMPRESSED AIR 100 P.S.I. (180 C.F.M.)
1* NATURAL GAS 1 P.S.I. (27" W.C.)
1* DOMESTIC WATER 60 P.S.I. (35 G.P.M.)
4* FLOOR DRAIN
+ DRAIN SYMBOL
ELECTRICAL SERVICE FROM OVERHEAD

GENERAL NOTE & LEGEND
ALL DRAPE LINES ARE SUBJECT TO CHANGE PER ON-SIGHT FIRE MARSHAL APPROVAL

INT'L SYMBOLS
MEN'S RESTROOM
WOMEN'S RESTROOM
PASSENGER ELEVATOR
ESCALATOR
RESTAURANT/ CONCESSION
FREIGHT ELEVATOR

LINETYPE LEGEND
ROLL-UP DOORS
AIRWALLS
LOW CEILINGS
KEEP CLEAR
OPEN ABOVE

DRAWING INFO
Passport Line Item Number: **#7934492**
Facility: MCCORMICK PLACE NORTH
Hall / Level: LEVEL 3, HALL B
City & State: CHICAGO, IL
Scale: CUSTOM
Job #: 497123
AE: JEFF MCCAWE
Prod. AE: KAREN BACIDORE
Started: 3/4/2022
Started By: JULIO PANTOJA, CHICAGO
Prod. Branch: CHICAGO

FREEMAN
Disclaimer - Every effort has been made to ensure the accuracy of all information contained on this floor plan. However, no warranties, either expressed or implied, are made with respect to this floor plan. If the location of building columns, utilities or other architectural components of the facility is a consideration in the construction or usage of an exhibit, it is the sole responsibility of the exhibitor to physically inspect the facility to verify all dimension and locations.
© Copyright 2022, Freeman Co. All rights reserved.
Confidential and Proprietary - the information contained herein is the proprietary information of Freeman and by accessing the information, the recipient agrees to keep the information confidential and not disclose it to any third party without the prior consent of Freeman. Recipient also agrees to only use the information for its internal evaluation purposes and for no other purpose, without the prior consent of Freeman.

File Path: C:\Vault\Designs\Projects\Natl Restaurant Assn Show\NARS2305\EventFloor\Plans\NARS23_NBL3.dwg | Tab Name: HALL B OVERALL L7934492.FP