

# THE NATL RESTAURANT ASSN SHOW

MAY 21-24 2022

MCCORMICK PLACE - LEVEL 3 - HALL D - CHICAGO, IL

**REVISION**

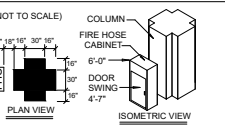
Date: 3/8/2021  
By: IGANCIO GONZALEZ

**BLDG. LEGEND:**

**LEGEND - EXHIBIT HALLS D1 & D2**

FHC - FIRE HOSE CABINET - MUST REMAIN CLEAR  
CEILING HEIGHT 8'0"  
DF - DRINKING FOUNTAIN  
PH - PHONE  
E - ELECTRICAL OUTLET  
FLOOR LOAD 400# PER SQ. FT.  
MALL FLOOR LOAD 250# PER SQ. FT.

**COLUMN/FIRE HOSE CABINET DETAIL**



**EXHIBIT HALL FLOOR PORT LEGEND**

**ELECTRICAL SERVICE**  
 1 3 - 120V, SINGLE, 15 AMP / 2 - TELEPHONE JACKS  
 2 1 - 480V, THREE, 100 AMP / 1 - 208V, THREE, 60 AMP  
 3 3 - 120V, SINGLE, 15 AMP / 2 - TELEPHONE JACKS

**MECHANICAL SERVICE**  
 1 MECHANICAL SERVICE FLOOR PORT  
 2 4" DRAIN  
 3 1" DOMESTIC WATER 60 PSI (35 GPM)  
 4 1" NATURAL GAS 1 PSI (27 WC)  
 5 1" COMPRESSED AIR 100 PSI (180 CFM)  
 6 MECHANICAL SERVICE FLOOR PORT  
 7 SAME AS ABOVE PLUS  
 8 2" STEAM, RETURN CONDENSATION 1-1/4", 100 PSI  
 9 PLUMBING PORTS & WATER GROOVE  
 10 WATER, NATURAL GAS, DRAIN

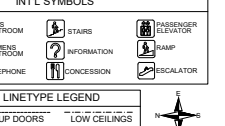
**LEGEND - FOR LAKESIDE BALLROOM**

**UTILITIES ON WALLS**  
 E - ELECTRICAL  
 PA - PULL ALARM  
 FHC - FIRE HOSE CABINET  
 S - SCIENCE (8'-0" off floor)  
 PH - PHONE  
 MIC - MICROPHONE  
 FS - FIRE ALARM  
**ELECTRICAL SERVICE FLOOR PORT**  
 1 2 - 208V, THREE, 30 AMP / 3 - 120V, SINGLE, 15 AMP  
 AUDIO, TV, PH  
**MECHANICAL SERVICE FLOOR PORT**  
 1 1" AIR, 1" WATER, 4" WASTE  
 BALL ROOM CEILING HEIGHT 8'0"  
 CATWALK ACCESSIBLE FOR HANGING

**GENERAL NOTE**

ALL DRAPE LINES ARE SUBJECT TO CHANGE PER ON-SIGHT FIRE MARSHAL APPROVAL.

**INTL SYMBOLS**



**LINE TYPE LEGEND**

ROLL-UP DOORS  
AIRWALLS  
LOW CEILINGS  
KEEP CLEAR

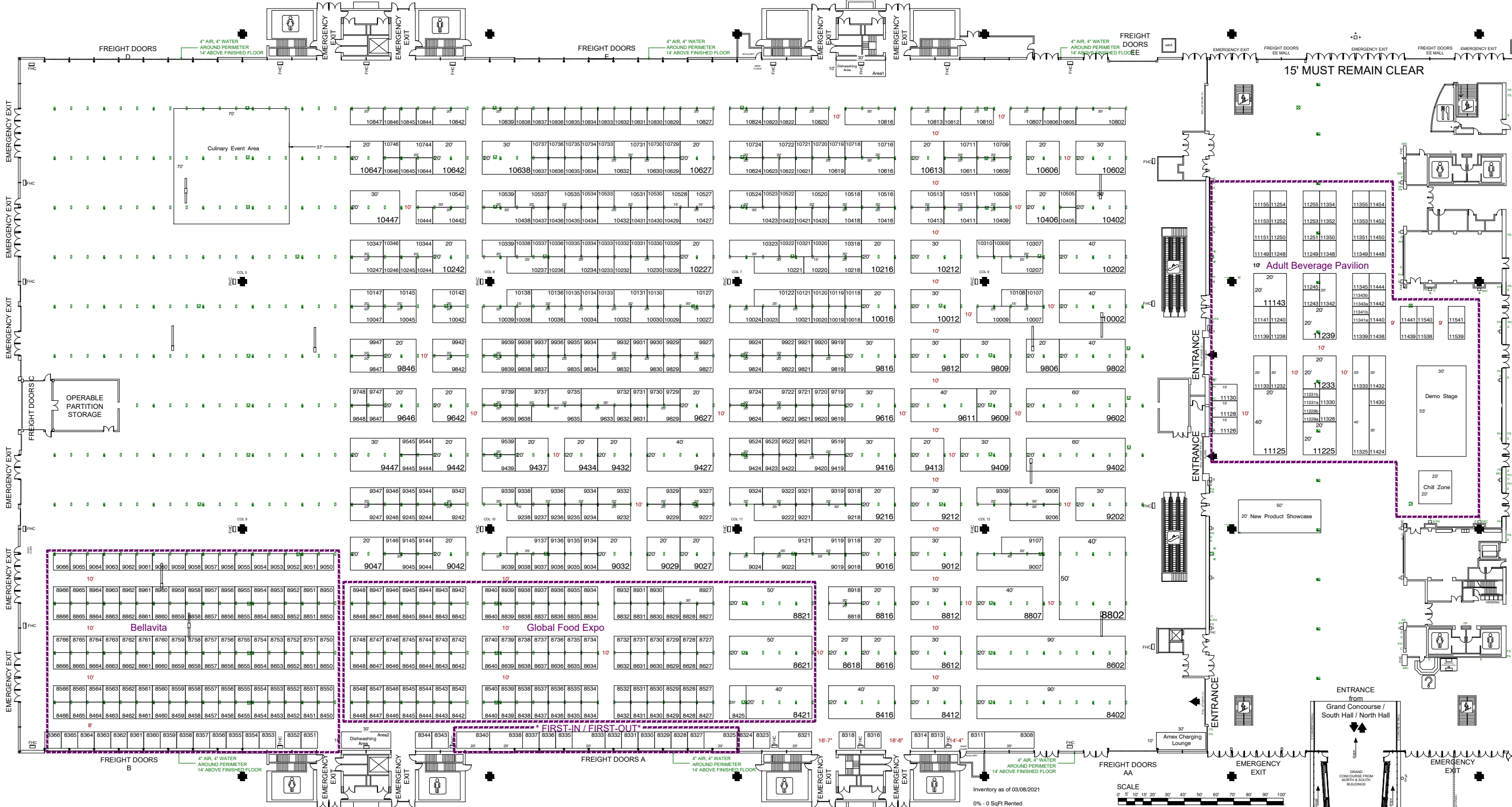
**DRAWING INFO**

Passport Line Item Number:  
**#6108759**  
 Facility:  
MCCORMICK PLACE LAKESIDE  
 Hall / Level:  
LEVEL 3, HALL D  
 City & State:  
CHICAGO, IL  
 Scale: CUSTOM  
 Job #: 497123  
 AE: JEFF MCCA  
 Prod. AE: KAREN BACIDORE  
 Started: 3/8/2021  
 Started By: JULIO PANTOJA, CHICAGO  
 Prod. Branch: CHICAGO

**FREEMAN**

**Disclaimer** - Every effort has been made to ensure the accuracy of all information contained on this floor plan. However, no warranties, either expressed or implied, are made with respect to this floor plan. If the location of building columns, utilities or other architectural components of the facility is a consideration in the construction or usage of an exhibit, it is the sole responsibility of the exhibitor to physically inspect the facility to verify all dimension and locations.  
 © Copyright 2021, Freeman Co. All rights reserved.

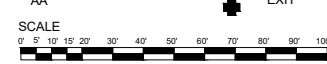
**Confidential and Proprietary** - the information contained herein is the proprietary information of Freeman and by accessing the information, the recipient agrees to keep the information confidential and not disclose it to any third party without the prior consent of Freeman. Recipient also agrees to only use the information for its internal evaluation purposes and for no other purpose, without the prior consent of Freeman.



Inventory as of 03/08/2021

0% - 0 SqFt Rented  
100% - 127,800 SqFt Available

| Dimension      | Qty        | Rented   | Available  |
|----------------|------------|----------|------------|
| 10x10          | 482        | 0        | 482        |
| 10x15          | 9          | 0        | 9          |
| 10x20          | 136        | 0        | 136        |
| 10x25          | 6          | 0        | 6          |
| 10x30          | 18         | 0        | 18         |
| 10x35          | 1          | 0        | 1          |
| 10x40          | 2          | 0        | 2          |
| 20x20          | 35         | 0        | 35         |
| 20x30          | 19         | 0        | 19         |
| 20x40          | 9          | 0        | 9          |
| 20x50          | 2          | 0        | 2          |
| 20x60          | 2          | 0        | 2          |
| 20x90          | 2          | 0        | 2          |
| 40x50          | 1          | 0        | 1          |
| 5x10           | 8          | 0        | 8          |
| <b>Totals:</b> | <b>732</b> | <b>0</b> | <b>732</b> |



needs verification

File Path: C:\\_Vault\Designs\Projects\Natl Restaurant Assn Show\NARS22\Level3.dwg | Tab Name: Overall Hall D L6667823 FP